

#41090 Urban Town Kit

Step-by-step assembly instructions

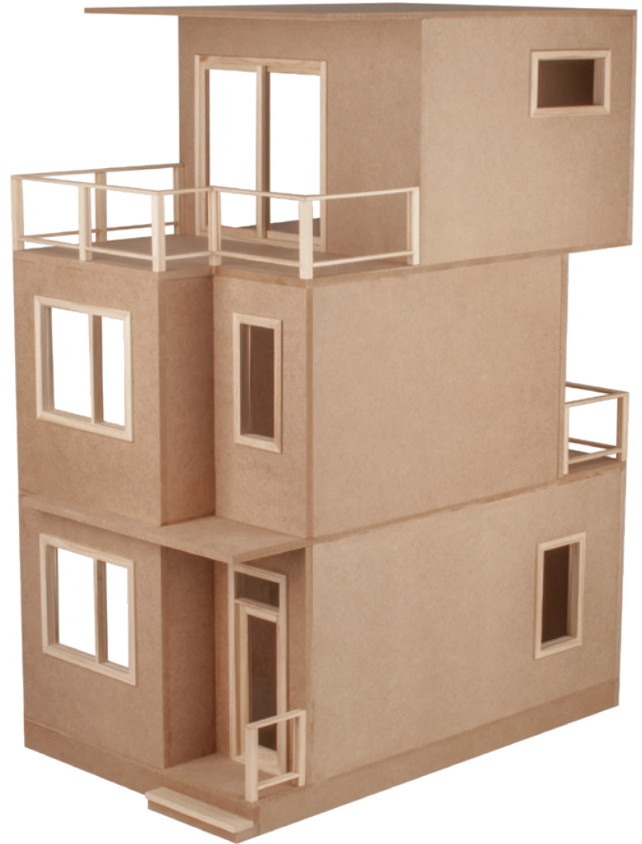
Copyright miniatures.com 2024

SUPPLIES NEEDED:

Masking tape
White glue (such as #1249 Weldbond)
Damp clean cloth
Exterior and interior finishes

GENERAL INSTRUCTIONS

- Identify and inspect all parts using the Parts List and Parts Diagram.
- Read the directions completely before beginning the project.
- If possible, have a dedicated work area so that you are not unpacking, repacking, and moving the project from place to place.
- Choose a work surface that is level, clean, dry, and protected from spills.
- Do a dry fit, using masking tape to hold parts in place, to make sure everything fits together correctly before assembling permanently.



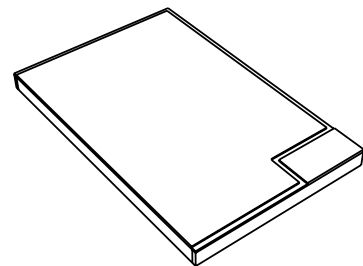
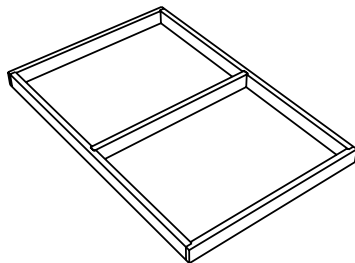
Tips: Plan the finishes for the interior and exterior at the dry-fit stage, before final/permanent assembly. It is easier to finish the panels as flat surfaces. Disassemble and finish as desired, then reassemble using glue.

Assembly Instructions

Foundation

Parts you will need in this section:

- A-01 Floor 1
- A-05 Front Foundation (2)
- A-06 Side Foundation (2)
- A-07 Middle Foundation



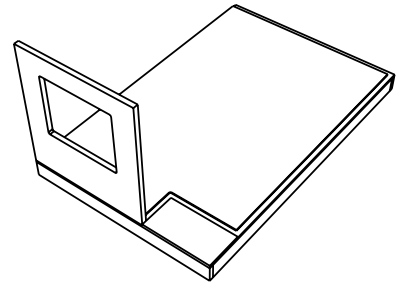
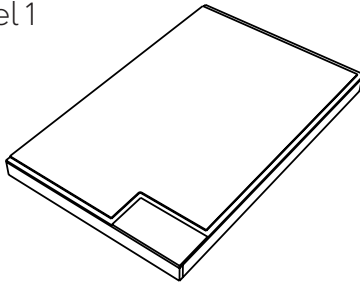
1. Glue and tape foundation perimeter. The ends of the **Side Foundation** insert into the rabbets of **Front Foundation**. The ends of **Middle Foundation** inset into the middle grooves.
2. Glue, tape, and weigh **Floor 1** to the foundation perimeter. Orient the floor with its grooves facing up. All edges are flush.

Shell

Parts you will need in this section:

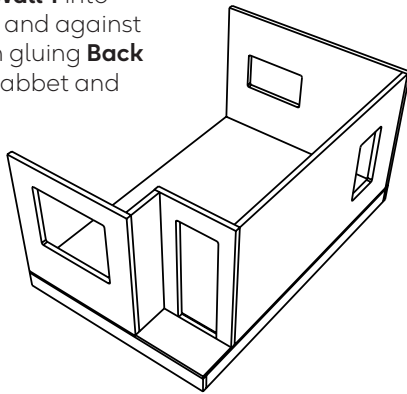
- A-02 Floor 2
- A-10 Front Wall (2)
- A-11 Front Corner Wall (2)
- A-12 Front Door Wall
- A-19 Side Wall 1
- A-20 Back Wall 1
- A-03 Floor 3
- A-13 Narrow Front Wall
- A-15 Side Wall 2 & Back Wall 3 (2)
- A-16 Back Wall 2
- A-17 Back Corner Wall 2
- A-18 Back Door Wall
- A-21 Side Wall 3
- A-04 Roof
- A-14 Sliding Door Wall

Level 1

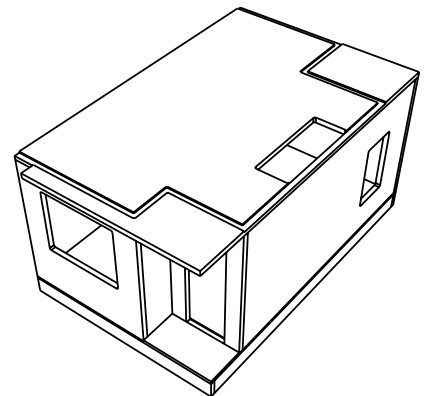


1. Orient the foundation assembly with the front porch cut out facing forward.
2. Glue **Front Wall** into the longest rabbet on the front of the foundation assembly. Orient it so that its window is towards the top. It is flush at the left edge.
3. Glue one of the **Front Corner Walls** to the right of **Front Wall** and into the front porch groove. It may be helpful to cut a sharper corner into the front porch groove on the floor.
4. Glue **Front Door Wall** into the front porch groove. Orient it so that the door on the exterior wall is centered.

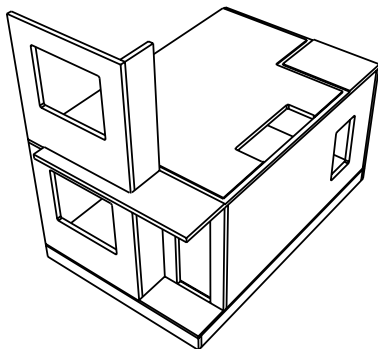
5. Continue around the house to the right, by gluing **Side Wall 1** into the right-side rabbet and against **Front Door Wall** then gluing **Back Wall 1** into the back rabbet and against **Side Wall 1**.



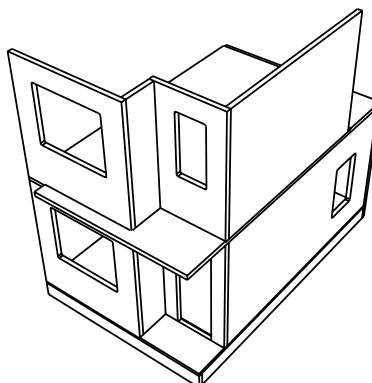
6. Glue **Floor 2** on top of the assembly with its grooves facing up. All edges are flush.
7. Square and let dry.



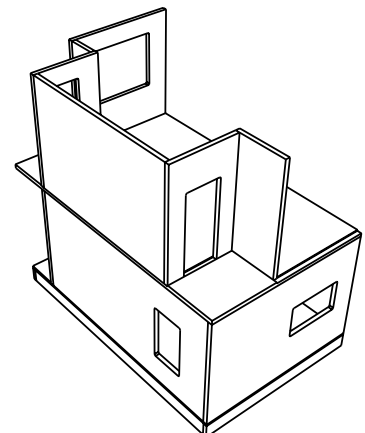
Level 2



1. Glue **Front Wall** into the longest rabbet on the front. Orient it so that the window is towards the top.
2. Glue **Front Corner Wall** into the groove at the overhang.

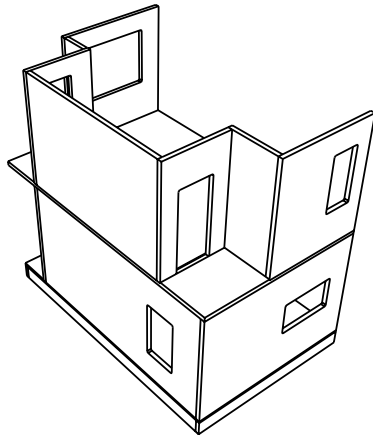


3. Continue around the house to the right by gluing **Narrow Front Wall** into the groove at the overhang and against **Front Corner Wall**, then gluing **Side Wall 2** into the right-side rabbet.

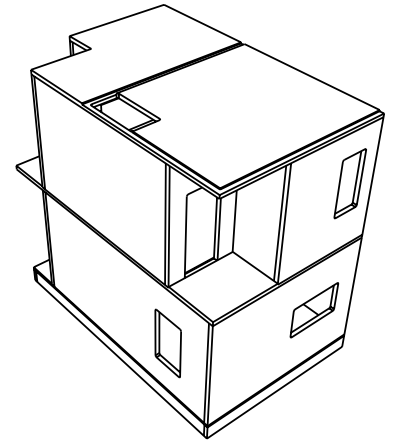


4. Glue **Back Door Wall** into the balcony groove then **Back Corner Wall** into the balcony groove.

5. Glue **Back Wall 2** into the back rabbet.

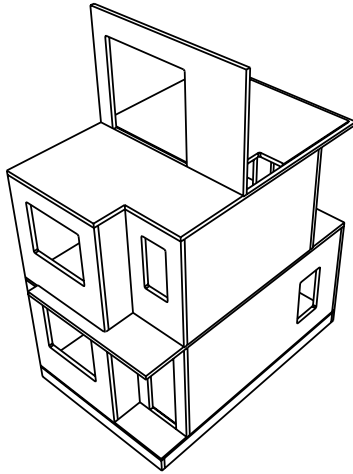


6. Place **Third Floor** on top of the assembly with its grooves facing up. All edges are flush.
7. Square and let dry.

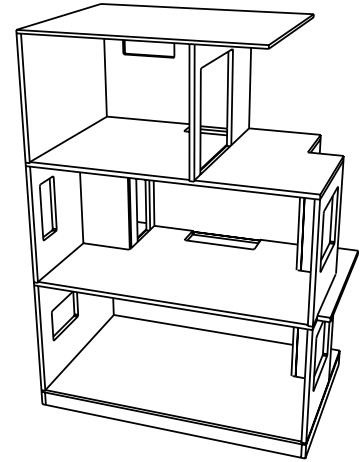


Level 3

1. Glue **Sliding Door Wall** in place. Orient it so that the opening is towards the left.



2. Glue **Side Wall 3** into the right-side rabbet. Orient it with the window towards the back and top.
3. Glue **Back Wall 3** into the back rabbet.
4. Place **Roof** on top of the assembly.
5. Square and let dry.



Front Step

Parts you will need in this section:

- A-08 Front Step
- A-09 Front Tread

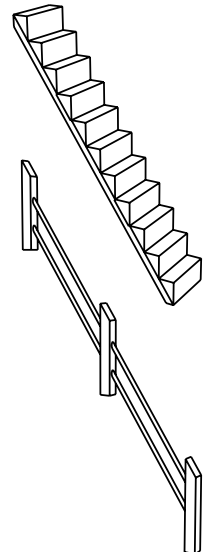
1. Glue **Front Step** to the foundation assembly and centered at the door.
2. Glue **Front Tread** on top of the step.

Stairs

Parts you will need in this section:

- A-42 Steps Block (2)
- A-43 Stair Upper Post (2)
- A-44 Stair Middle Post (4)
- A-45 Stair Lower Post (2)
- A-46 Treads (22)
- A-58 Stair Handrail (2)
- A-79 Stair Long Cable (4)
- A-22 Under Stair Wall
- A-23 Triangle Wall

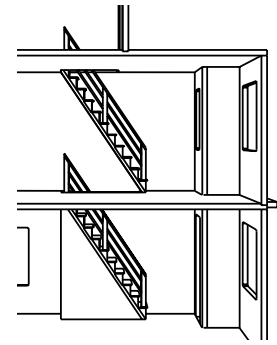
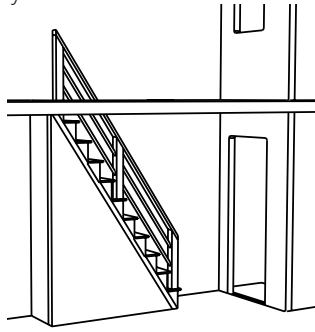
1. Orient the **Steps Block** so that the steps are steeper than they are deep.
2. Glue a **Tread** onto each step. They overhand at the left (when climbing up). Let dry and set aside.
3. Glue two **Cables** into the holes on **Stair Lower Post**. The post has upward angled holes on Side 1 and is mitered at one end. Assembling the railing flat on a work surface is helpful.
4. Glue the other ends of the cables into the holes on one side of **Middle Stair Post**. The post has angled holes on Sides 1 and 3 and is mitered at one end.
5. Glue two more **Cables** into the holes on the other side of the **Stair Middle Post**.
6. Glue the other ends of the cable in the holes on an **Stair Upper Post**. The post has downward angled holes on Side 1 and is mitered at one end.
7. Let the glue set for a few minutes.
8. Stand the railing assembly on the assembly from Step 2.
9. Glue each post to a step.



10. Glue **Handrail** to the top of the posts. Orient the rail so that its angled ends follow the stair angle.
11. Assure all joints are flush and square, let dry.
12. Install the assembly on **Floor 1**, up through the opening in **Floor 2** and against **Side Wall 1**.



13. Glue **Under Stair Wall** to **Triangle Wall** matching their angles at the top.
14. Glue this wall assembly under the stair assembly.
15. Let dry.



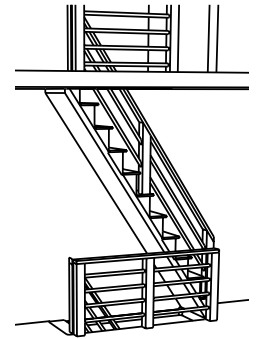
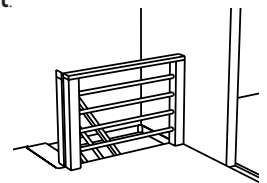
16. Repeat Steps 1-11.
17. Install the assembly on **Floor 2**, up through the opening in **Floor 3** and against **Side Wall 2**.

Hall Railing

Parts you will need in this section:

- A-75 Hall End Post (5)
- A-76 Hall Middle Post
- A-77 Short Cable (8)
- A-78 Medium Cable (4)
- A-84 Hall Handrail 3
- A-85 Hall Handrail 2

1. Glue four **Hall Medium Cables** into the holes on **Hall End Post**. This post has straight holes on Side 1 and is flat at both ends. Assembling the railing flat on a work surface is helpful.
2. Glue the other ends of the cables into the holes on another **Hall End Post**.
3. Glue **Hall Handrail 3** to the tops of the posts.
4. Let the glue set for a few minutes.
5. Install the assembly on **Floor 3** along the stairwell.
6. Assure all joints are flush and square and let dry.
7. Glue four **Hall Short Cables** into the holes on **Hall End Post**.
8. Glue the other ends of the cables into the holes on one side of **Hall Middle Post**. This post has straight holes on Sides 1 and 3 and is flat at both ends.
9. Glue four more **Cables** into the other holes on the post.
10. Glue the other ends of the cables into the holes on another **Hall End Post**.
11. Glue **Hall Handrail 2** to the tops of the posts.
12. Let the glue set for a few minutes.
13. Install the assembly on **Floor 2** along the stair well.
14. Assure all joints are flush and square and let dry.

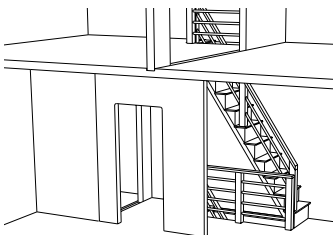


Interior Walls

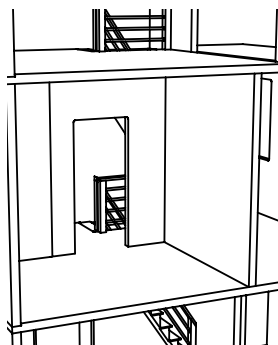
Parts you will need in this section:

- A-24 Open Divider
- A-25 Solid Divider (2)

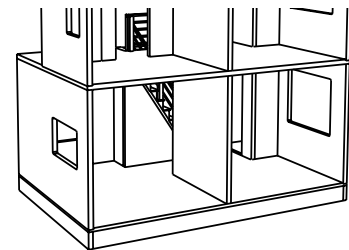
The interior walls can be glued in place or left removable.



1. **Open Divider** goes on the 2nd level against **Back Corner Wall** to form a hallway leading to the balcony.



2. One **Solid Divider** goes on the 2nd level against **Open Divider** and separated the space into two rooms.



3. The other **Solid Divider** goes on the 1st level to separate the space into two rooms.

Windows & Doors

Parts you will need in this section:

- A-36, 47-49 Front Door, Trim and Transom Pane
- A-37, 48, 50 Back Door and Trim
- A-41, 87, 88 Sliding Door and Trim
- A-48, 50, 86 Interior Door and Trim
- A-38, 51, 52, 55 Wide Window, Trim and Pane (2)
- A-39, 51, 53, 57 Window, Trim and Pane (2)
- A-40, 51, 54, 56 Window, Trim and Pane (3)

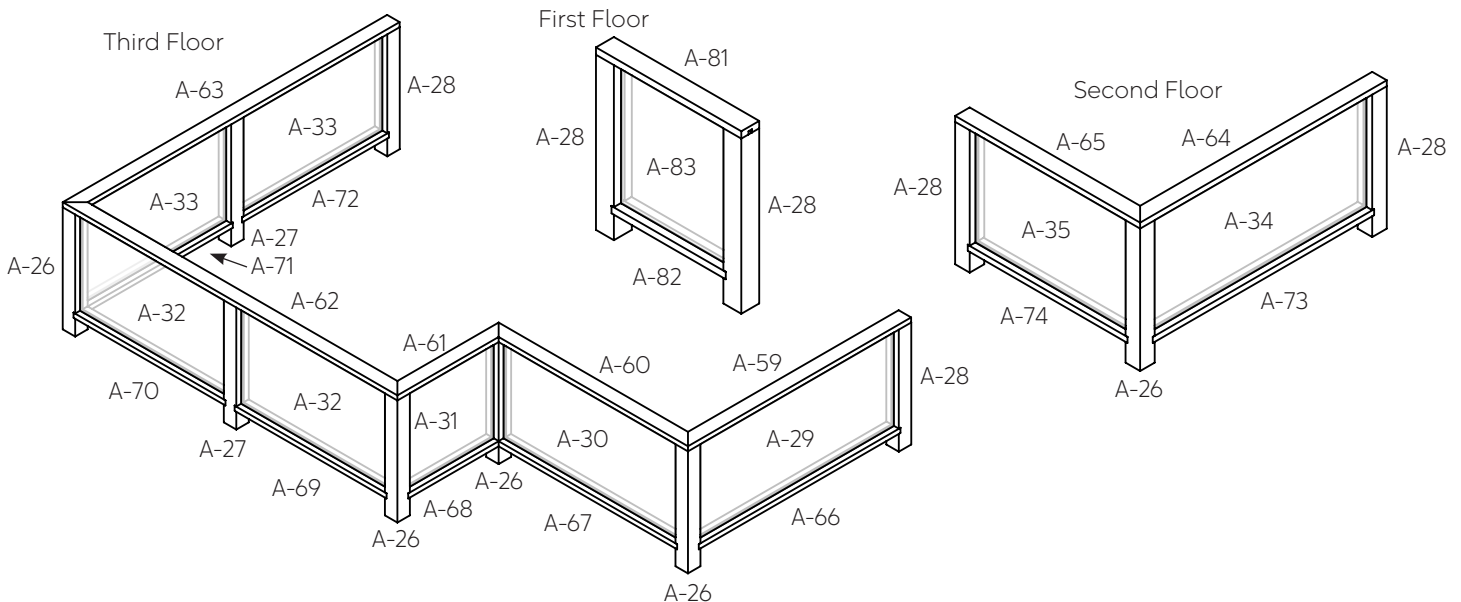
1. Paint or otherwise finish the windows and doors. The acrylic door panels are removable from the **Front** and **Back Doors** for easier finishing. Gently pull the top of the frame to remove it. Then slide out the acrylic.
2. Assemble, glue, and finish all window and door trim. Gluing the trim to graph paper and cutting it out when finished with a sharp blade can be helpful.
3. Glue the windows and doors into their openings.
4. Place the acrylic panes into their corresponding window frames.
5. Glue all trim assemblies to their corresponding wall surfaces.

Exterior Railings

Parts you will need in this section:

- A-26 Balcony Corner Post (5)
- A-28 Balcony End Post (6)
- A-27 Balcony Middle Post (2)
- A-29-35, 83 Balcony Panes
- A-66-74, 82 Bottom Rails
- A-59-65, 81 Top Rails

1. Paint, stain or otherwise finish all posts and rails before assembly. Clean out any dust or finishes from the grooves in the posts and rails.
2. Assemble as flat panel components then stand and combined these to finish the assembly. Assembling on graph paper can be helpful to assure the assemblies are square.
3. Before sliding acrylic panes into the post and rail assemblies, clean away any glue in the grooves and peel off the protective film from the acrylic panes. Do not glue the panes into place. They are held in place by the grooves.
4. Refer to the drawing for parts identification and their placement when assembling the top balcony railing. Notice that inside corners have been trimmed off of **Bottom Rails** where they meet Corner Posts.
5. Continue in a similar manner for the back and front door railings.



Parts List

Dimensions are approximate.

Foundation

- A-01** Floor 1
 - 14⁷/₈"W x 1¹/₄"H x 23"L
- A-05** (2) Front Foundation
 - 1¹/₄"W x 1¹/₂"H x 14⁷/₈"L
- A-06** (2) Side Foundation
 - 1¹/₄"W x 1¹/₂"H x 22⁵/₁₆"L
- A-07** Middle Foundation
 - 1¹/₄"W x 1¹/₂"H x 14³/₁₆"L

Shell

- A-02** Floor 2
 - 14⁷/₈"W x 3³/₈"H x 24 "L
 - A-10** (2) Front Wall
 - 9¹/₂"W x 3³/₈"H x 9¹⁵/₁₆"L
 - A-11** (2) Front Corner Wall
 - 2¹/₂"W x 3³/₈"H x 9¹⁵/₁₆"L
 - A-12** Front Door Wall
 - 5³/₄"W x 3³/₈"H x 9¹⁵/₁₆"L
 - A-19** Side Wall 1
 - 9¹⁵/₁₆"W x 3³/₈"H x 19³/₈"L
 - A-20** Back Wall 1
 - 9¹⁵/₁₆"W x 3³/₈"H x 14⁷/₈"L
 - A-03** Floor 3
 - 14⁷/₈"W x 3³/₈"H x 23 "L
 - A-13** Narrow Front Wall
 - 5³/₄"W x 3³/₈"H x 9¹⁵/₁₆"L
 - A-15** (2) Side Wall 2 & Back Wall 3
 - 9¹⁵/₁₆"W x 3³/₈"H x 14⁷/₈"L
 - A-16** Back Wall 2
 - 8⁷/₈"W x 3³/₈"H x 9¹⁵/₁₆"L
 - A-17** Back Corner Wall 2
 - 4¹/₂"W x 3³/₈"H x 9¹⁵/₁₆"L
 - A-18** Back Door Wall
 - 6 "W x 3³/₈"H x 9¹⁵/₁₆"L
 - A-21** Side Wall 3
 - 9¹⁵/₁₆"W x 3³/₈"H x 13¹/₁₆"L
 - A-04** Roof
 - 14⁷/₈"W x 3³/₈"H x 19 "L
 - A-14** Sliding Door Wall
 - 9¹⁵/₁₆"W x 3³/₈"H x 14⁷/₈"L
- ## Front Step
- A-08** Front Step
 - 7⁷/₈"W x 1¹/₂"H x 5³/₈"L
 - A-09** Front Tread
 - 1 "W x 1¹/₄"H x 5³/₈"L
- ## Exterior Railings
- A-26** (5) Balcony Corner Post
 - 3³/₈"W x 3³/₈"H x 3 "L

- A-28** (6) Balcony End Post
 - 3³/₈"W x 3³/₈"H x 3 "L
- A-27** (2) Balcony Middle Post
 - 3³/₈"W x 3³/₈"H x 3 "L
- A-29** Balcony Pane
 - 2¹/₂"W x 1¹/₁₆"H x 5³/₄"L
- A-30** Balcony Pane
 - 2¹/₂"W x 1¹/₁₆"H x 5 "L
- A-31** Balcony Pane
 - 2¹/₂"W x 1¹/₁₆"H x 2¹/₂"L
- A-32** (2) Balcony Pane
 - 2¹/₂"W x 1¹/₁₆"H x 4¹/₄"L
- A-33** (2) Balcony Pane
 - 2¹/₂"W x 1¹/₁₆"H x 4¹/₄"L
- A-34** Balcony Pane
 - 2¹/₂"W x 1¹/₁₆"H x 4 "L
- A-35** Balcony Pane
 - 2¹/₂"W x 1¹/₁₆"H x 5¹/₂"L
- A-83** Balcony Pane
 - 2¹/₂"W x 1¹/₁₆"H x 2¹/₂"L
- A-66** A-66 Bottom Rail
 - 1¹/₂"W x 1¹/₈"H x 5³/₄"L
- A-67** A-67 Bottom Rail
 - 1¹/₂"W x 1¹/₈"H x 5 "L
- A-68** A-68 Bottom Rail
 - 1¹/₂"W x 1¹/₈"H x 2¹/₂"L
- A-69** A-69 Bottom Rail
 - 1¹/₂"W x 1¹/₈"H x 4¹/₄"L
- A-70** A-70 Bottom Rail
 - 1¹/₂"W x 1¹/₈"H x 4¹/₄"L
- A-71** A-71 Bottom Rail
 - 1¹/₂"W x 1¹/₈"H x 4¹/₄"L
- A-72** A-72 Bottom Rail
 - 1¹/₂"W x 1¹/₈"H x 4¹/₄"L
- A-73** A-73 Bottom Rail
 - 1¹/₂"W x 1¹/₈"H x 5¹/₂"L
- A-74** A-74 Bottom Rail
 - 1¹/₂"W x 1¹/₈"H x 4 "L
- A-82** A-82 Bottom Rail
 - 1¹/₂"W x 1¹/₈"H x 2¹/₄"L
- A-59** A-59 Top Rail
 - 1¹/₂"W x 1¹/₈"H x 6¹/₄"L
- A-60** A-60 Top Rail
 - 1¹/₂"W x 1¹/₈"H x 5³/₄"L
- A-61** A-61 Top Rail
 - 1¹/₂"W x 1¹/₈"H x 3¹/₄"L
- A-62** A-62 Top Rail
 - 1¹/₂"W x 1¹/₈"H x 9¹/₂"L
- A-63** A-63 Top Rail
 - 1¹/₂"W x 1¹/₈"H x 9¹/₄"L

- A-64** A-64 Top Rail
 - 1¹/₂"W x 1¹/₈"H x 6 "L
 - A-65** A-65 Top Rail
 - 1¹/₂"W x 1¹/₈"H x 4¹/₂"L
 - A-81** A-81 Top Rail
 - 1¹/₂"W x 1¹/₈"H x 2⁷/₈"L
- ## Interior Walls
- A-24** Open Divider
 - 6⁷/₈"W x 3³/₈"H x 9⁷/₈"L
 - A-25** (2) Solid Divider
 - 8¹/₂"W x 3³/₈"H x 9⁷/₈"L

Stairs

- A-42** (2) Steps Block
 - 2¹/₄"W x 3³/₄"H x 12¹/₄"L
- A-43** (2) Stair Upper Post
 - 3³/₈"W x 3³/₈"H x 2⁷/₈"L
- A-44** (4) Stair Middle Post
 - 3³/₈"W x 3³/₈"H x 2⁷/₈"L
- A-45** (2) Stair Lower Post
 - 3³/₈"W x 3³/₈"H x 2⁷/₈"L
- A-46** (22) Treads
 - 3³/₄"W x 1¹/₁₆"H x 2³/₈"L
- A-58** (2) Stair Handrail
 - 3³/₈"W x 1¹/₈"H x 11⁷/₈"L
- A-79** (4) Stair Long Cable
 - 1¹/₈"W x 5¹/₈"L
- A-22** Under Stair Wall
 - 1⁷/₈"W x 3³/₈"H x 9⁵/₈"L
- A-23** Triangle Wall
 - 6¹/₂"W x 3³/₈"H x 9⁵/₈"L

Hall Railing

- A-75** (5) Hall End Post
 - 3³/₈"W x 3³/₈"H x 3"L
- A-76** Hall Middle Post
 - 3³/₈"W x 3³/₈"H x 3"L
- A-77** (8) Short Cable
 - 1¹/₈"W x 2³/₄"L
- A-78** (4) Medium Cable
 - 1¹/₈"W x 3⁷/₈"L
- A-84** Hall Handrail 3
 - 3³/₈"W x 1¹/₈"H x 4³/₈"L
- A-85** Hall Handrail 2
 - 3³/₈"W x 1¹/₈"H x 6⁵/₈"L

Windows & Doors

- A-36** Front Door
 - 3³/₈"W x 1¹/₂"H x 8¹/₂"L
- A-37** Back Door

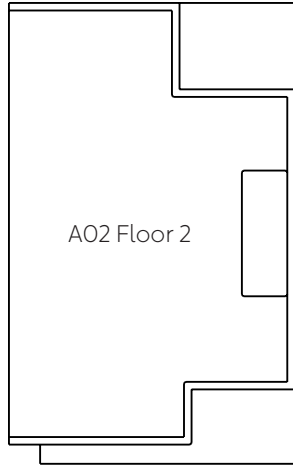
- 3³/₈"W x 1¹/₂"H x 7³/₁₆"L

- A-41** Sliding Door
 - 8"W x 1¹/₂"H x 8¹/₄"L
- A-86** Interior Door
 - 3³/₈"W x 1¹/₂"H x 7³/₁₆"L
- A-38** (2) Wide Window
 - 5¹/₄"W x 1¹/₂"H x 6¹/₄"L
- A-39** (2) A-39 Window
 - 3¹/₄"W x 1¹/₂"H x 5¹/₄"L
- A-40** (3) A-40 Window
 - 2³/₄"W x 1¹/₂"H x 5¹/₄"L
- A-49** Front Door
 - Transom Pane
 - 1¹/₄"W x 1¹/₁₆"H x 2⁷/₈"L
- A-55** (2) Wide Window Pane
 - 3¹/₄"W x 1¹/₁₆"H x 4¹/₂"L
- A-56** (5) A-40 Window Pane
 - 2 "W x 1¹/₁₆"H x 4¹/₂"L
- A-57** (3) A-39 Window Pane
 - 2¹/₂"W x 1¹/₁₆"H x 4¹/₂"L
- A-87** (2) Sliding Door
 - Side Trim
 - 1¹/₄"W x 1¹/₈"H x 8¹/₈"L
- A-88** Sliding Door Top Trim
 - 1¹/₄"W x 1¹/₈"H x 8¹/₂"L
- A-47** (2) Front Door Side Trim
 - 3³/₈"W x 1¹/₈"H x 8¹/₂"L
- A-50** (4) Back & Interior Doors Side Trim
 - 3³/₈"W x 1¹/₈"H x 7³/₁₆"L
- A-48** (6) Doors Top Trim
 - 3³/₈"W x 1¹/₈"H x 3³/₈"L
- A-51** (14) Windows Side Trim
 - 3³/₈"W x 1¹/₈"H x 5¹/₄"L
- A-52** (4) Wide Window Top & Bottom Trim
 - 3³/₈"W x 1¹/₈"H x 6¹/₄"L
- A-53** (4) A-39 Window Top & Bottom Trim
 - 3³/₈"W x 1¹/₈"H x 3¹/₄"L
- A-54** (6) A-40 Window Top & Bottom Trim
 - 3³/₈"W x 1¹/₈"H x 2³/₄"L

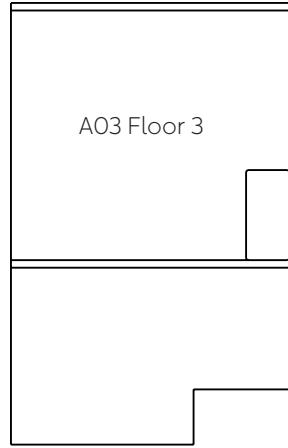
Parts Diagram



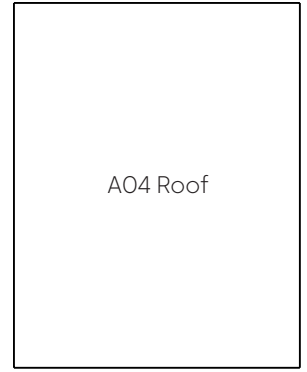
A01 Floor 1



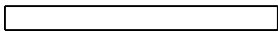
A02 Floor 2



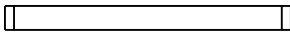
A03 Floor 3



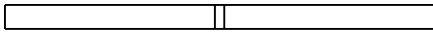
A04 Roof



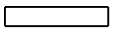
A07 Middle Foundation



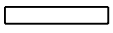
A05 Front Foundation



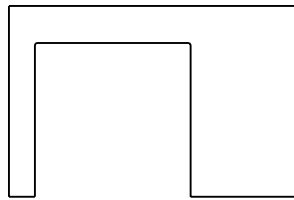
A06 Side Foundation



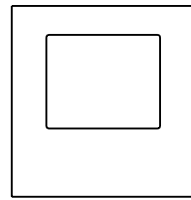
A08 Front Step



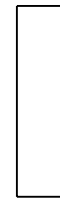
A09 Front Tread



A14 Sliding Door Wall



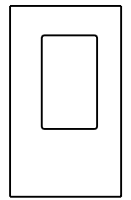
A10 Front Wall



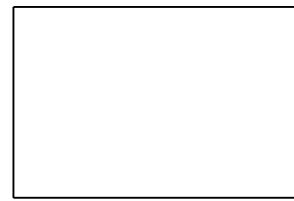
A11 Front Corner



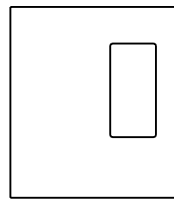
A12 Front Door Wall



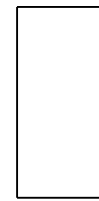
A13 Narrow Front Wall



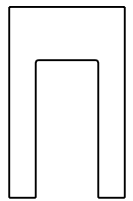
A15 Side Wall 2 & Back Wall 3



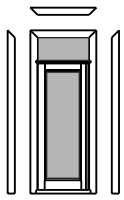
A16 Back Wall 2



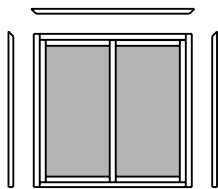
A17 Back Corner Wall



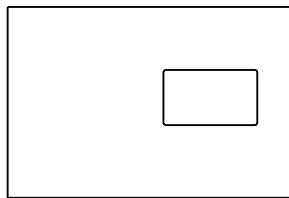
A18 Back Door Wall



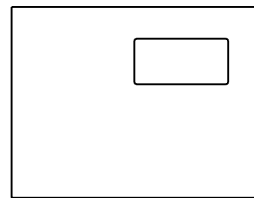
A36 Front Door
A47 Side Trim
A48 Top Trim
A49 Transom Pane



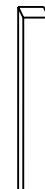
A41 Sliding Door
A87 Side Trim
A88 Top Trim



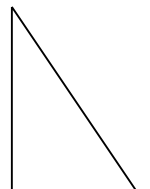
A20 Back Wall 1



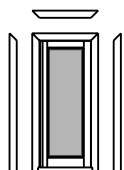
A21 Side Wall 3



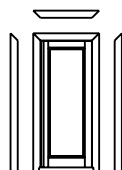
A22 Under Stair Wall



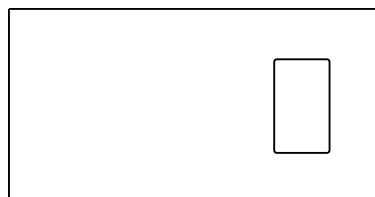
A23 Triangle Wall



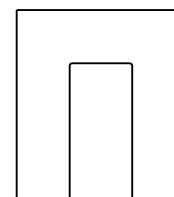
A37 Back Door
A48 Top Trim
A50 Side Trim



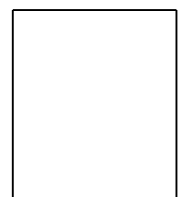
A86 Interior Door
A48 Top Trim
A50 Side Trim



A19 Side Wall 1



A24 Open Divider



A25 Solid Divider



A29 Pane



A35 Pane



A30 Pane



A32 Pane



A33 Pane



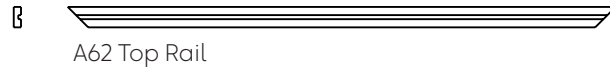
A34 Pane



A31 Pane



A83 Pane



A62 Top Rail



A63 Top Rail



A59 Top Rail



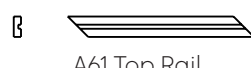
A64 Top Rail



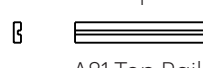
A60 Top Rail



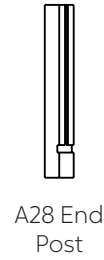
A65 Top Rail



A61 Top Rail



A81 Top Rail



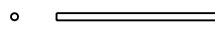
A28 End Post



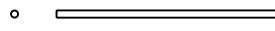
A26 Corner Post



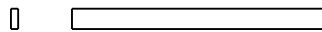
A27 Middle Post



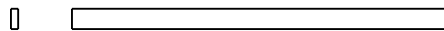
A77 Short Cable



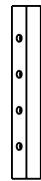
A78 Medium Cable



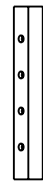
A84 Hall Handrail 3



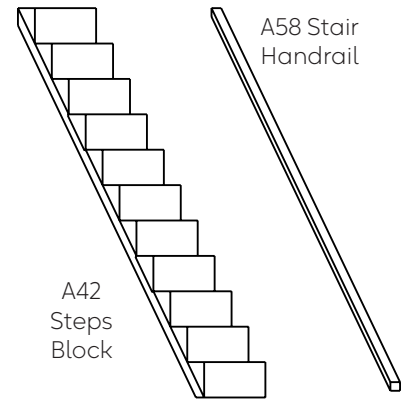
A85 Hall Handrail 2



A75 Hall End Post

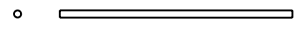


A76 Hall Middle Post (2-sides drilled)

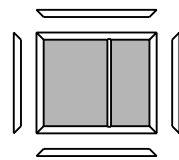


A58 Stair Handrail

A42 Steps Block



A79 Long Cable

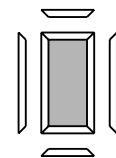


A38 Wide Window

A51 Side Trim

A52 Top/Bottom Trim

A55 Wide Window Acrylic Pane

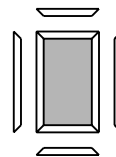


A40 Window

A51 Side Trim

A54 Top/Bottom Trim

A56 A-40 Window Acrylic Pane

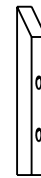


A39 Window

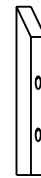
A51 Side Trim

A53 Top/Bottom Trim

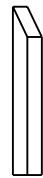
A57 A-39 Window Acrylic Pane



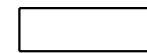
A44 Middle Stair Post (2-sides drilled)



A43 Upper Stair Post



A45 Lower Stair Post



A46 Stair Tread

We hope you enjoy your Urban Town Dollhouse kit! For finishing tips and more information, visit miniatures.com. We would love to see how yours turns out; please send pictures to support@miniatures.com.

Questions? Contact us at support@miniatures.com or call 1.800.926.6464 (Mon-Fri 10:00 AM-5:00 PM ET).